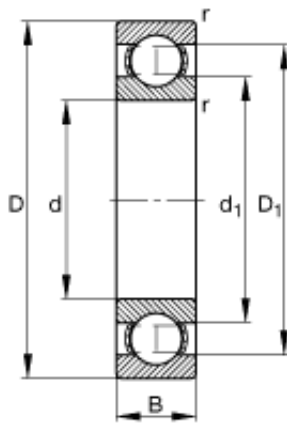




BEARING PRECISION AXLE CORP.



30 mm x 55 mm x 13 mm FAG S6006 Single Row Ball Bearings

Bearing No. S6006

Size	30x55x13 mm
Bore Diameter	30 mm
Outer Diameter	55 mm
Width	13 mm
d	30 mm
D	55 mm
B	13 mm
D_1	47,2 mm
$D_{a \max}$	50,4 mm
d_1	38,3 mm
$d_{a \min}$	34,6 mm
$r_{a \max}$	1 mm
r_{\min}	1 mm
m	0,109 kg / Weight
C_r	11240 N / Dynamic load rating (radial)
C_{0r}	6610 N / Static load rating (radial)
n_G	18500 1/min / Limiting speed
n_B	13100 1/min / Reference speed
C_{ur}	390 N / Fatigue limit load, radial

S6006 Bearing 2D drawings and 3D CAD models